

The GYSFLASH 50.12 FV is a high-power, 50 A, stabilised power supply that incorporates Inverter technology offering five separate functions:

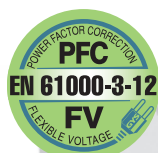
- **Battery support:** sustains 12 V (liquid or gel), automotive batteries during diagnostic work
- **Advanced battery charging:** ensures an ideal charging cycle for battery maintenance operations, even for the most modern vehicles
- **Showroom mode:** maintains batteries in showroom vehicles
- **Battery Change mode** maintains an electrical power supply to preserve the vehicle's memory settings
- **High-power, stabilised power supply;** adjustable current and voltage

## 5 operating modes

- Charging mode
- Diagnostic mode
- Showroom mode
- Change Battery mode
- Power Supply mode

## Advanced features

- Automatic restarting
- Cable testing and calibrating
- Showroom mode locking feature
- Easy charging mode
- Activate and adjust expert-level charging curves
- Automatic SOS sulphated-battery recovery



## Intuitive interface

Boasting 19 available languages

## Slimline design

The device has been purposefully designed with an ultra-low height (< 11 cm), enabling it to fit comfortably underneath a vehicle.

## Cables

- Fitted with 2 x 2.5 m - 10 mm<sup>2</sup> cables
- It can be fitted with 2 x 8 m - 16 mm<sup>2</sup> and more. The calibration will take place automatically

## TECHNOLOGY

High duty cycle  
**94%**  
15% more energy



No external ventilation  
=  
No dust ingress



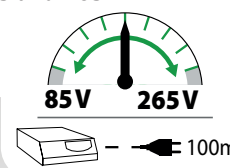
### Inverter

This technology enables:

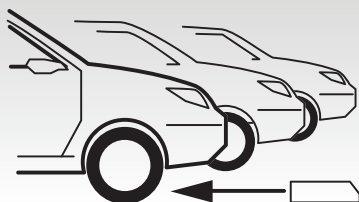
- A better, lightweight duty cycle (6.5 kg)
- Shock- and vibration-absorbing feet

### FV Flexible Voltage

The GYSFLASH 50.12 FV is designed to operate on the mains power grid between **85 and 265 V**.



## FEATURES



### Featuring a specialised showroom mode and an ultra-slim design:

- Low height (< 11 cm): enabling the device to be placed under a vehicle.
- Showroom mode lock: avoids mishandling errors making it ideal for garages and showrooms.
- Automatic restart: automatically resumes the previous operating mode in the event of a power failure.

CE - EN 60335-2-29

50/60hz	850 W	Imax 100% @25°C	12 V	MIN. Ah	MAX. Ah	Charging Curve	BSU			Change Battery	IP	cm	kg
							Diag	Diag+	Showroom				
85 > 265 V	850 W	50 A	12 V	10-600 Ah	I <sub>U</sub> , I <sub>0</sub> , U	13,5V	12 > 14.8V	12.9 V	80 A	IP 21	30x29.2x10.5	6.5	